



VILLINKI®

Lasting Values



## Fresh Breeze from the Finnish Archipelago

The time had come to develop a new and different line of furniture. Special attention was paid to making the furniture beautiful, durable and easily modifiable. The long life-span of the furniture line, as well as the surface treatment materials, preserve nature, which was also one of the aims of the design. In the quiet archipelago of the Gulf of Finland, the idea for a brilliant new door mechanism was also born.

Seppo Salmevaara

On an island, August 12, 2002



## Lasting Values

Traditional craftsmanship and modern technology come together in developing the Villinki furniture line. These skills guarantee the first-rate quality of the furniture. Due to the strong structure, the cabinet can also be attached to the wall. Villinki will last for a lifetime, should you wish so.



## Brilliant Door Mechanism

The door is attached to the metal railing on top. In this manner, it slides smoothly and the rail does not collect dust. The doors are traditionally framed, and every window is a separate glass unit. The thickness of the security glass is 4 mm.





## More than a Case

The Villinki line also offers you a sofa and side table with a glass top, a dining table with chairs, as well as a PC-desk.



In addition to a traditional dresser unit, the dresser elements provide you with a TV-deck and a handy magazine shelf. You can also combine dresser and cabinet elements into one whole. The options include two base models. The Villinki line also has a slat door cupboard.







## Natural and Original

Villinki furniture is mostly made from massive birch – original and durable solid wood. The furniture is painted (white) or alternatively stained and varnished (brown). All the products used for the surface treatment are water-based. All this helps to preserve nature.



Villinki furniture pleases the eye and it is also pleasant to touch and to use. You can make a combination of your choice from the sliding door cabinet elements, whether you need a bookcase, display case for collectibles or a cupboard for dishes. Side windows add light to the cases and allow your collection to be displayed.



## A New Bedroom

A Villinki bedroom made out of durable birch is an entirely new, enjoyable whole: a bed, a night table and a wardrobe.

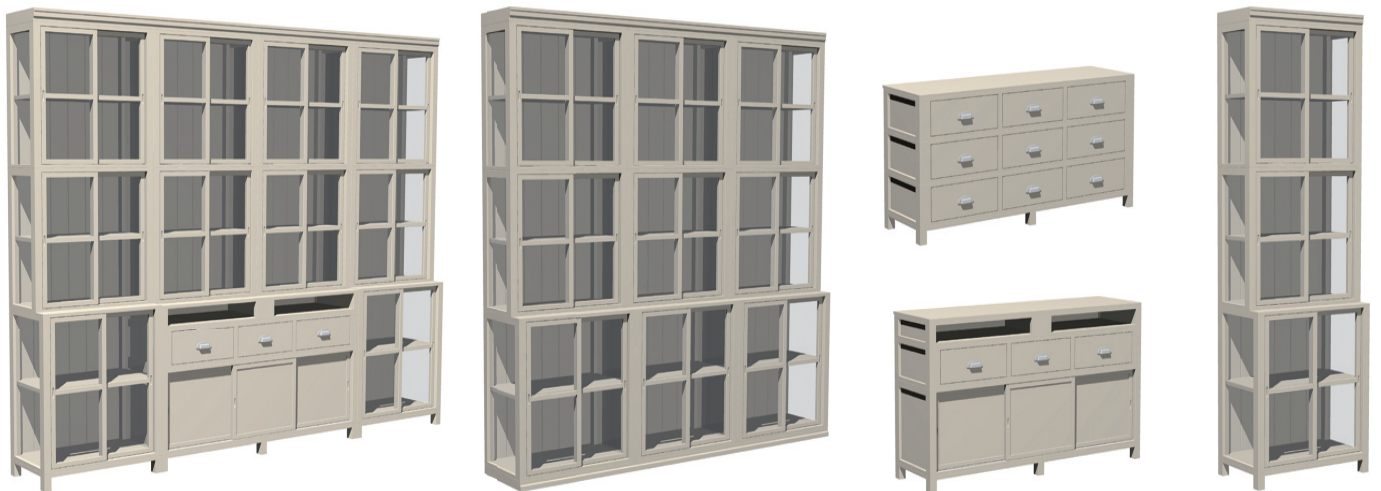


The bed is available with or without a canopy. The same design pattern repeats itself in the cabinet doors and the ends of the bed.

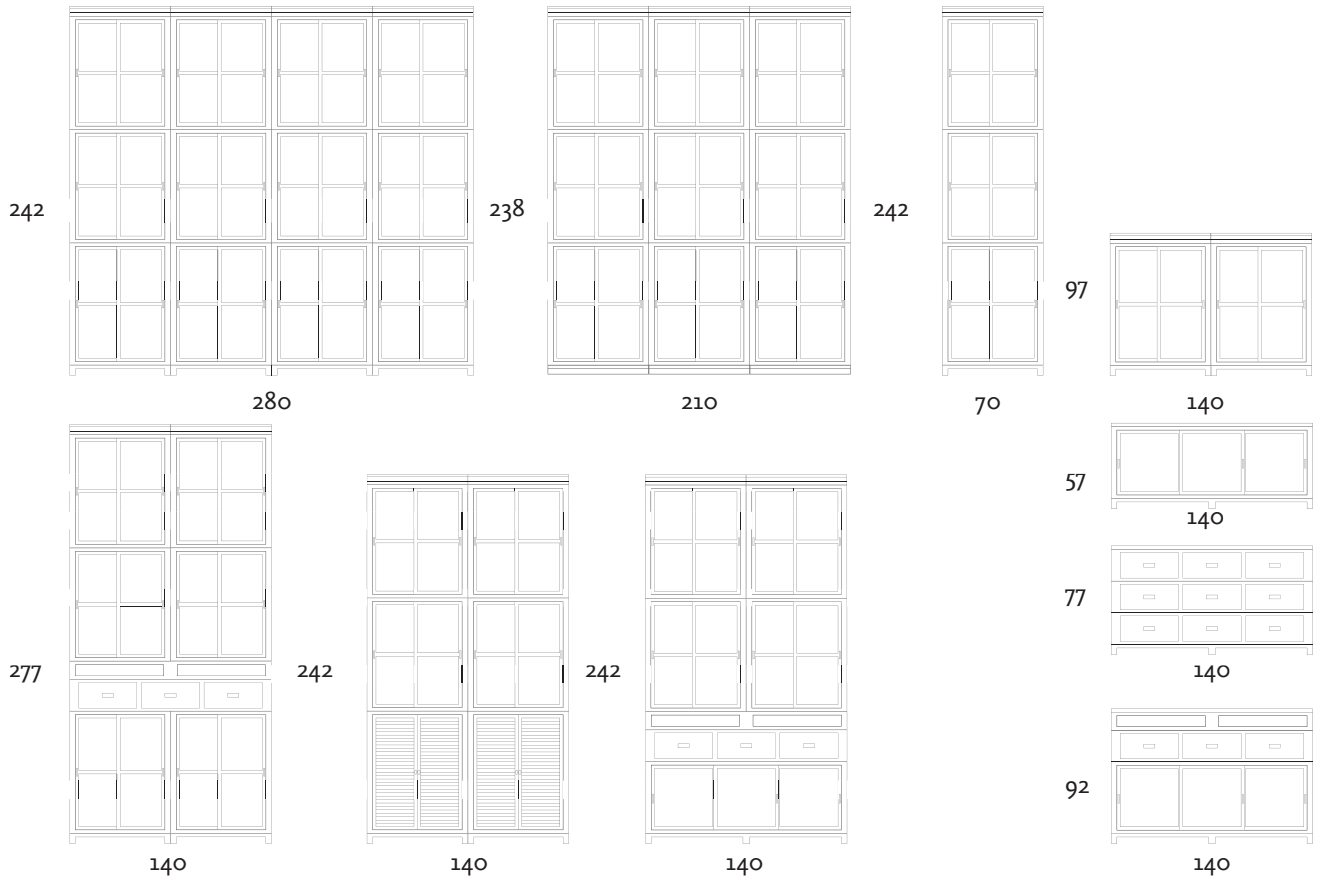
The wardrobe has drawers opening entirely outwards, as well as sliding doors that close silently by themselves.



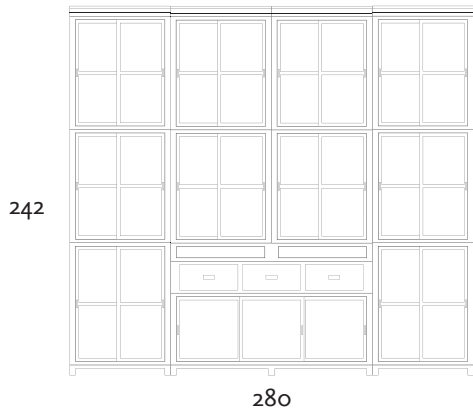




Would you like to try out different possibilities? Cabinet building program can be found at: [www.boknas.com](http://www.boknas.com)



A few examples of different combinations.  
Dimensions in full centimetres.



Measurements	Height	Width	Depth
Small cabinet	70	72.5	31
Small Leg Base	70	9	31
Small Base Unit	70	5	31
Small Top Unit	70	6.6	31
Small Deck Unit	70	1.6	31
Small Bottom Unit	70	1.6	31
Big Cabinet	70	81.5	39
Slat Door Cupboard	70	81.5	39
Big Leg Base	70	8.6	39
Big Base Unit	70	5	39
Big Top Unit	70	6.6	39
Big Deck Unit	70	1.6	39
Big Bottom Unit	70	1.6	39
Wide Leg Base	140	9	39
Wide Cabinet	140	46	39
Wide Drawer Unit	140	22	39
Wide Open Shelf	140	13	39
Wide Deck Unit	140	1.5	39
PC-Desk	144	77	64

### Easy to Modify

Villinki has been designed for the changing spaces and needs in all kinds of homes. It provides an easily modifiable alternative for decorating your home. By combining the elements of the furniture line, you can create individual wholes that are easy to modify and extend. The furniture is delivered as ready-made elements, which can just be put on top of one another or be placed side by side.

Villinki® is a trademark registered by Boknäs Oy. All rights to changes are preserved. Even partial copying of the material is prohibited.

Boknäs Furniture Ltd.  
Martinkyläntie 45  
FI-01720 VANTAA, Finland  
tel. +358-9-4770 3230  
fax +358-9-4770 3250  
info@boknas.fi



**BOKNÄS**

[www.boknas.com](http://www.boknas.com)